



April 2022

Turning Times

THE NEWSLETTER OF THE CASCADE WOODTURNERS ASSOCIATION

The April 2022 Meeting

We are planning to hold Cascade's April meeting in person at Wild Lilac, and also broadcast the meeting on Zoom. However, at the time this is written we cannot be certain that COVID will allow the in-person meeting. If the in-person part of the meeting is cancelled we will send an email to members promptly. Please check your email before traveling to Wild Lilac.

The meeting will start at 6:30 PM. The meeting room and Zoom session will open at 6:00 PM.

President's Message

Happy April, and I hope you all are doing well and are enjoying the beauty of the blooming flowers and trees of Oregon!

We (the Board) have been working hard to bring the Wild Lilac Child Development Center (WLCDC) forward in the hopes of having our meetings there rather than just on Zoom. WLCDC has a new Director, Beverly Ajie, who along with a volunteer and several of our Board members have [\[continued\]](#)



Cascade Woodturners Association is a local chapter of the American Association of Woodturners (the "AAW"). The AAW may hold its annual symposium in Portland, Oregon in 2024. For more about the AAW click [here](#).

The April 2022 Demo

At Cascade's April meeting Tod Raines will present a remote demonstration showing us how to turn small plates from face grain and end grain wood, and how to embellish them.



Tod Raines has been turning since 2003. He has also been a leader in the development of interactive remote demonstrations (IRDs) and has helped many woodturning clubs have better remote demos. You can find out more about Tod and his work on his [website](#).

Tod also operates the Woodturning Tool Store, which you can find [here](#).

Wild Lilac

When Cascade meets in person it meets at the Wild Lilac Child Development Center (WLCDC), which is located at:

[3829 SE 74th Avenue, Portland, Oregon.](#)

Good Stuff on Later Pages (click on the title to go there)

[Dale's Open Shop on April 30th!](#)

[March Show and Tell Pics](#)

[Kevin's Safety Tips](#)

[Wood Is All Around Us!](#)

[Pizac's Tool Tips](#)

[Using Cascade's Website](#)

[Cutting a Log and Mounting a Green Bowl Blank](#)



President's Message continued

[continued from page 1] cleaned out the storage area and adjacent breezeway (2 huge dumpsters full) so that we are now able to build out our storage area and store all the equipment for doing in-person and remote meetings. We are shooting for it to be completed by the time of our April 21 meeting, but definitely should have it done no later than our May meeting.

We are still doing IRDs (Interactive Remote Demos) and on April 21st Tod Raines from Texas will be demonstrating his "small plates". Tod is an accomplished demonstrator so this will be an interesting demo of something we have not had before. He will show us face grain as well as end grain work and a variety of embellishing techniques. He will be on the demo with us so he will be able to answer any questions you might have.

Peggy Schmid will be our May demonstrator and I am working on getting a demonstrator for our June meeting hoping that we will be able to open for in-person meetings with in-person demonstrators, but please bear with us for the future demos and

meetings as it seems that a new variant of Covid is starting to hit the US and we do not yet know exactly what it is like for our health. In the meantime, we request that all of you who wish to attend in-person be fully vaccinated and boosted so we can keep all of our members (and guests) safe and healthy. We will also have N95 and KN95 masks available for anyone who needs one.

I would like to thank all members for your patience and understanding during this once in a lifetime (hopefully) pandemic and realize that your Board has done a phenomenal job learning new computer skills, researching and purchasing the equipment to bring our technology up-to-date, and all the starts and stops of planning, and a thousand other little things this new "normal" has thrown at us.

Looking forward to seeing everyone at the meeting at 6:30 PM on April 21 at WLCDC, but if you are not able to attend in-person, please be sure to join us on ZOOM!

Suzanne Jensen, President

Treasurer's Report

It is that time of year again. Time to become a member of Cascade Woodturners that bunch of fun-loving guys who love to party around a wood lathe. Annual dues are the same as last year, \$35. You may either pay on our website at CascadeWoodturners.com or send a personal check for \$35 to CWT, % Kenneth Kirkman, 22429 NE 234th Court, Battle Ground, WA 98604. Telephone number 360.687.9866 (land-line) just in case you have any questions. If you desire a club membership card, remember you can print those from CWTs web site.

Ken Kirkman, Treasurer

Help Wanted!

Since Steve Walgrave is continuing as Secretary and is also an integral part of our tech team in producing our Zoom and the in-person technology at the meetings, his talents are needed in these areas so I am asking to replace him in the position of Store Keeper. I would like to have someone step forward and volunteer to take over this position for 2022. You may contact me by phone or by email (see below). I'll be waiting for your phone call or email so I can explain further what the Store Keeper duties are.

Suzanne Jensen, President

Women in Turning

The women's turning group resumed meeting -- finally! There were 10 women from the three area chapters. We will be meeting the first Saturday of every month at 1600 W 20th St, Vancouver.

We are going to be following a new format: From 9-12, we'll have a scheduled beginner class with required pre-registration and a small fee. From 12-2, we'll have an open session for people to bring the questions and small projects. Registration won't be required for this. For more information please contact Kathleen.woodspinner@gmail.com

Kathleen Duncan, WIT Liaison





Woodturning Safety

Electrical Overloads Can Lead To Fire



These photos were sent to me by another turner.

They had been having issues with the electrical system in their shop for several months before discovering this. I had even gone out to their shop to help track down the culprit, with no luck.



Finally, they tracked the problem to this splitter, which had failed due to overloading. They had a dust collector and another piece of equipment plugged into this device. The 20A circuit that was

feeding the receptacle was able to handle the load, but it was too much for this splitter.



An overload like this generates heat, which causes the internal metal parts to expand when the load is applied and then contract when the load is shut off. This causes two things to happen, first the expansion/contraction of the metal can loosen mechanical connections.

Second, the heating/cooling effect can cause condensation, which leads to corrosion. Both weaken the electrical connection, which leads to further overheating and arcing, and possibly fire. Luckily this was found before there were any smoke or flames. It was also fortunate that the load connected to this receptacle was only in use while the turner was in the shop.

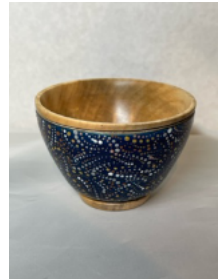
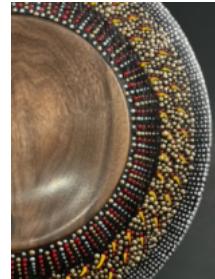


Electrical systems have no moving parts. Failures are typically at the point that the wiring is connected to the device, either because the terminations were never properly torqued, soldered, or otherwise attached, or because those points of connection have broken down over time due to being overloaded. If you have any device placed between the receptacle and your cords, please inspect it regularly. Also, if cords seem loose in, or fall out of your receptacles, get them replaced ASAP.

Kevin Jesequel, Safety Officer

The May Demo

Our May meeting presenter, **Peggy Schmid**, hails from just north of the Atlanta area, and she is also a demonstrator at this year's AAW Symposium. She is an accomplished sculptor, art educator and woodturner. For us, she will be showing her turning skills on small pieces and incorporating some interesting embellishing techniques. We'll let you know more in the May Newsletter, so watch for an update!



Dale's Corner



March open shop Saturday was a success. We had six lathes set up. Three projects got turned, a bowl, a sphere and a hollow form.

We will do April open shop on Saturday

April 30th. We will start about 9am and go to noon or so. We encourage new and beginning woodturners to take advantage of open shop. We always have plenty of experienced turners to help with projects and problems. Open shop Saturday takes place at Dale Larson's shop in Gresham. Feel free to call or email if you have questions.



Dale Larson woodbowl@frontier.com

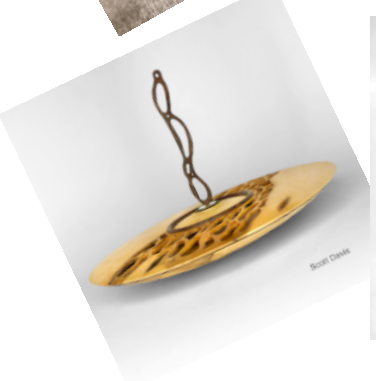
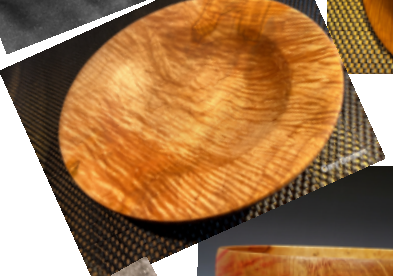
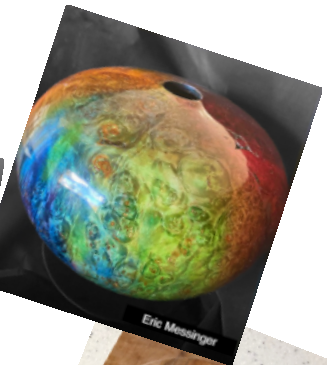
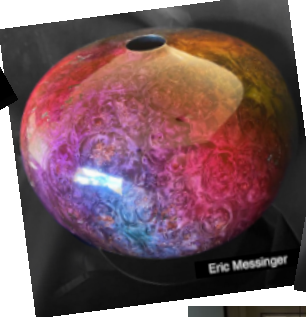
For Sale

Members can advertise things they are selling. To see their ads, log in and click [here](#).

To see these images better click [here](#):



March 2022 Show and Tell





The Company Store

The Company Store is here for the benefit of our members. We buy in bulk (usually with a discount) and sell at cost!

New and In Stock – The Store now carries 2” Scalloped Sanding Discs, hook & loop backed, for power sanding. Grits available are from 100 through 400. Packages of 10 or 50 available.



Made from the same PS33 aluminum oxide paper as in the sanding sheets. The scalloped edge discs wrap around the edge of the sanding pad so there is no sharp edge to scratch your work.

We continue to carry Klingspor 9x11” sheet sanding paper, Walnut Oil, EndSeal, as well as StarBond CA glues and accelerator.

Cascade WoodTurners has an online STORE for your turning supplies! Since we are not having in-person meetings, and even after we do, we have created an online store for you, our members. You will find it on the Cascade Website, in the Members Only section. Orders and payments are all handled online. Once an order is created, delivery and/or pickup will be arranged. Current prices are listed on the website. Try it, you’ll like it!

For your reference, below is some info on the Klingspor papers we carry:

PS33 - These are our "STEARATE" sheets. They are Aluminum Oxide, resin bonded, paper-backed for long life and tear-resistance. This material is recommended for bare wood sanding and autobody use. Applications include sanding of bare metal, primer surfacer and between coats of paint, lacquer and shellac. Also useful on sanding of solid surface countertops such as corian, fountainhead, and avonite.

(Stearated sandpaper is also known as self-lubricating sandpaper. It is used primarily for sanding wood and paint finishes as well as metal. The applied lubricant or soap prevents clogging and extends the life of the sandpaper.)

KL385 - The KL385 is aluminum oxide material resin bonded to a very flexible J-flex cotton backing for general clean up and maintenance operations on steel, non-ferrous metals, and wood. This is very similar to the PS33 material but on a much more flexible backing.

Steven Walgrave Secretary and Interim Storekeeper

Using Cascade’s Website by Steven Walgrave

Remember the Cascade Website? Do you know what’s on it? Do you know how to get to it? It’s there for you!



The Cascade WoodTurners website is a resource for you to use as often and as much as you like. As an Active (paid subscriber) member you have full access to the info and web resources of the club. You can look up

contact info for other members, view past recorded demonstrations, view Show & Tell photos, and much more. Following is a list of the many things the website contains.

But first, if you don’t remember your

password, or have never logged in, contact me either at 503-997-6378 (text please) or swalgrave@comcast.net.

I will have the website send you an email (to your listed email address) with a new password. Log in with your email address and the supplied password. Then it is suggested that you immediately click on “Change password”, right next to your name at the top left of the page, and change your password to something that you might remember (maybe even write it down somewhere). The email with the temporary password will come from

‘Cascade Woodturners Association<admin@cascadewoodturners.org>’

so it should show in your inbox, but you may have to check your junk file if you don’t see it.

Home Page – The Home page has some info and some photos pertaining to the Association and it’s



Using Cascade's Website, continued, by Steven Walgrave

meetings. Most importantly though it has the links to the other pages, in this banner:

Home Events Gallery of Member Work Newsletters Members Only ☰

Just click on any item in this banner to get to the respective page.

Also from the Home page, one can click on your name and update your personal information, get your membership card, set your preferences and view your current and past invoices. Also, if you wish, you can upload photos of your work into your personal photo albums for others to view.

This page also has the link to change your password (top left near your name).

Events – This page will list the upcoming scheduled demonstrations, as well as a listing of the past events for the past couple of years.

Gallery of Member Work – This page has links to pictures of the Show & Tell items that have been displayed during our meetings for the past year of two. These pictures are also a great source of inspiration and ideas for projects and personal challenges.

Newsletters – This page has links to the current as well as many many past newsletters.

Members Only – This page is a sub-menu page only available to members who are logged in, and includes the following:

- Member Directory - This will link you to the member directory where you can find information and contact info on other members, as well a view their personal photo albums if they have some
- Information provided by demonstrators and Video Links – This page has links to recordings past meetings and demonstrations where available, as well as links to handouts, supply lists, articles,

sketches and other info.

- CWA Store – This is where you can order available wood turning and finishing supplies as well as pay for them and leave notes pertaining to delivery/pickup. Available supplies include, sand paper and discs, CA glue and activator, EndSeal, and walnut oil.
- Forums – There are two Forums, the Q & A Forum, for questions and responses relative to any woodturning issues (open to all members), and the Buy & Sell forum which is devoted to listing items for sale and/or wanted to buy. Note that in either forum you can click on the “Subscribe to Forum” and you will then be email notified of entries to the forum on the day following their entry, and thus keep up to date on the forum, or on particular topics as selected.
- Minutes of Board Meetings – This page has links to minutes to all of the Board Meetings for the past several years.



Hovering over this symbol will show links to the following:

- Supporters and Discounts – A listing of the vendors who offer discounts to CWA members or who support the Association.
- Join Us – A link to the online enrollment form, for those who are not yet members.
- Donate – A link to the Donate form for deductible contributions to CascadeWoodTurners Association.
- Contact – A listing of all current Officers and Members of the Board as well as meeting location info.
- About Cascade – The current Association Bylaws, in their entirety.

Steven Walgrave, Cascade Secretary

AAW News

2022 AAW Symposium in Chattanooga

The next AAW Symposium is scheduled for June 23-26, 2022. Registration is now open, but the cost is scheduled to go up if you register after June 1, 2022. You can find out more [here](#).





Officers and Board Members

President	Suzanne Jensen	772-521-5102	suzannejensen@bellsouth.net
Vice President	Harvey Rogers	646-660-3669	harveyrogers@gmail.com
Secretary	Steve Walgrave	503-997-6378	woodsven13@gmail.com
Treasurer	Ken Kirkman	360-687-9866	kenpegkirkman@gmail.com
Web Mistress	Kathleen Duncan	360-574-0955	woodspinner@gmail.com
Safety Officer	Kevin Jesequel	971-777-3198	kevinjesequel@msn.com
Librarian	Len Otto	503-663-0794	Len@HonorYourPast.com
Video Librarian	Joyce Botsch	503-473-3889	joycebotsch@comcast.net
Storekeeper (temp)	Steve Walgrave	503-977-6378	woodsven13@gmail.com
Member-at-large	Howard Borer	503-901-3401	howardborer@yahoo.com
Member-at-large	Russ Coker	503-701-2508	racoker@comcast.net
Member-at-large	Ajit Aserappa	415-794-7968	ajit.aserappa@gmail.com
Newsletter Editor	Jerry Klug	541-550-6299	turningwood@bendbroadband.com
Past President	Gary Borders	360-609-1241	gbborders@comcast.net
Mentor Coordinator	Skip Burke	503-233-4263	drgramp@comcast.net

Cascade's Sponsors

Support of the sponsors listed helps maintain our hobby supplies. Remember that your current membership card may good for discounts at these firms.



Gilmer Wood Company

Gilmerwood.com



Klingspor Abrasives, Inc.

Klingspor.com



Milwaukie Hardwoods LLC

Milwaukiehardwoods.com



ROCKLER

Rockler Woodworking and Hardware

Rockler.com

EST 1928

WOODCRAFT®

Woodcraft Supply LLC

Woodcraft.com



Woodcrafters Woodworking Supplies

Woodcrafters.us

Doug's Tool Tips



Tool Tip

by Doug Pizac

One of the more challenging aspects of turning for me is to create smooth straight spindle work whether they be dowels, jam chucks with their own morse tapers, etc.

So I created MDF sticks with each side having 80-320 grit sandpaper strips glued onto them. With four sides, as one strip wears out you can rotate the stick to a fresh strip. Each stick is one grit.

For the glue I used 3M's General Pur-

pose adhesive which is rubber cement in a can. Be sure to coat the stick and paper.

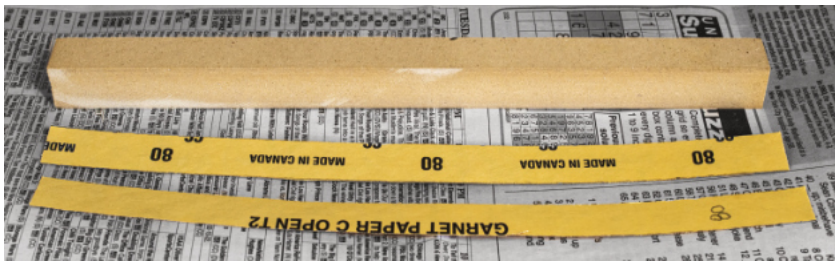
To mount the strips, use newspaper to catch over-spray, coat two sides of the stick and the back of two sandpaper strips. Then press the strips onto the stick. Rotate the stick to its two bare sides and repeat.

Another use of the sticks is on the outside of a bowl or hollow form that has slight unwanted ridges.

Instead of making a new sweep with your gouge, hold the sanding stick at an angle to the bowl and use 80-grit sandpaper to eliminate the bump, followed by higher grits to get the smoothness you desire.



Five 3/4x3/4x11 inch MDF sticks with 80, 120, 150, 220 and 320 grit sandpaper sheets. You can also cut the sticks in half for shorter sanding projects like a morse tapered jam chuck.





Remote Demonstration Event Calendar

[AAW Presents: Phil Irons Turning Spectacular Hollow Forms](#)

Saturday, April 16, 2022 3:00 p.m. Eastern Time

[Nesting Egg Boxes with Cindy Drozda](#)

Apr 13, 01:00 PM - 04:00 PM (ET)

[Woodturning Boxes, A Three-Part Series: Part One: The Basics with Scott Hampton](#)

Apr 19, 01:00 PM - 04:00 PM (ET)

[Woodturning Boxes, A Three-Part Series: Part Two: Design Possibilities with Scott Hampton](#)

Apr 26, 01:00 PM - 04:00 PM (ET)

[Turn an Oval Box with a Sphere Lid with Tod Raines](#)

Apr 30, 01:00 PM - 04:00 PM (ET)

[WIT Presents: 2022 eXchange Presentation of Projects](#)

June 4, 2022 at 3pm Eastern Time, registration opens around May 20, 2022.

Local Woodturning Chapters

[Northwest Woodturners](#)

Thursday, June 2, 2022

Multnomah Art Center, 6:00 PM - 8:00 PM
John Beechwood - Knitting Bowls



[Southwest Washington Woodturners](#)



[Willamette Valley Woodturners](#)

Thursday, April 14, 2022

Salem Center 50+
Demonstrator: Dan Tilden – Natural Edge

Thursday, May 12, 2022

Salem Center 50+
Demonstrator: Josh Kinsey – Steampunk?

Willamette Valley Woodturners

Bowl Harvesting and Turning Articles by Gary Borders

I had the good fortune to be one of the first students in Dale Larson's Bowl Turning Class startup a few weeks ago. This was a three-day class covering the harvesting of a bowl from a tree thru the finished turning of a shop-dried bowl. This class was excellent and has inspired me to write a series of articles covering the class. Dale has graciously agreed to edit these articles and to assist with appropriate diagrams. These following five Cascade Newsletter articles are planned over the coming months.

1. Cutting the log and mounting a green bowl blank on the lathe (in this issue)

2. Turning the outside of the bowl and creating a properly sized tenon
3. Turning the inside of the bowl and sealing the endgrain for drying
4. Preparing and mounting a dried bowl for turning, then turning and sanding the outside of the bowl
5. Turning the rim and inside of the bowl, sanding and finishing

Gary Borders, Past President

Cutting a Log and Mounting a Green Bowl Blank by Gary Borders

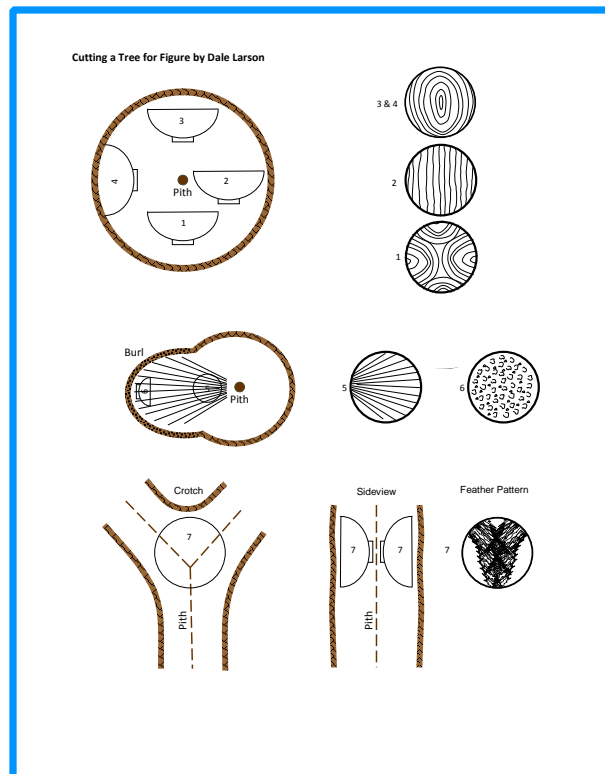
Cutting the Blank from Tree / Log

The log segment should be about 2" greater than the diameter.

Once segment is cut, examine the location of the pith. The pith will often have a crack in one or more direction.

Bisect the segment by cutting directly through the pith in a direction that will yield two balanced bowl blanks with the pith at the top of the bowl, so it will be removed when rough turning the green bowl. If the pith has many cracks or has begun to degrade, you may have to cut a couple of inches of the pith away to end up with two useable bowl blanks.

Before chain sawing the segment mark the bark above the pith (or planned cut path) at both ends. Brace the log segment for a perfectly vertical chain saw cut. You may also cut the outside of each bowl blank parallel with the inside cuts to allow for safer band sawing and mounting on the lathe.



Band sawing the bowl blank from the log

Mark the radius of the planned cut using calipers or a round template and pen. Ensure the blank sits flat on the band saw table and does not rock to ensure a safe cut. Follow the scribe or pen marks and ensure your hand does not point into the running blade of the bandsaw at any point.

The blank is ready for turning at this point, but if you are going to wait before turning, be sure to seal the end grain to minimize potential cracking of the wood.

Mounting the green blank on the lathe

The green blank can safely be mounted between centers on the lathe for roughing the outside of the bowl. A four-wing Spur Drive is recommended for the headstock. The tailstock should use a ring center. This combination allows for moving the blank as necessary in the tailstock or headstock to achieve the necessary balance

– both physically and aesthetically. Using a tail stock with a center point makes it very difficult to adjust the bowl blank.



Cutting a Log and Mounting a Green Bowl Blank continued

Aesthetically balancing the blank on the lathe

With the lathe turned off, rotate the blank by hand to ensure the tool rest is out of the way. Turn on the lathe at a safe speed and use your bowl gouge to trim off enough of the remaining bark to see features of the blank, such as the grain and spalting features and the heart / sap wood line.

Stop the lathe and examine the blank for aesthetic balance. Use your finger, or a pencil, to find the heart / sap wood transition. Rotate the blank, keeping track of this line with a pointer on the tool rest, ensure this heart / sap transition line appears at the same place on the tool rest when rotated 180

degrees. It is likely off by a bit, which you can adjust by loosening the tail stock and moving the blank as needed using the ring center. Tighten the tailstock and repeat the check for balance.

At this point, you can also do a gross check for objectionable features such a bark inclusions, limbs, and unwanted holes in the blank. As needed the headstock position can be moved to reduce / eliminate such features. You may also have to repeat the aesthetic balancing above as a result of changes at the headstock.

Gary Borders, Past President

Wood Is All Around Us!

We live in an amazing place, especially if you are a woodturner.

Around us grow all kinds of turnable woods, and we can often get turnable chunks of wet wood from our woodturning clubs, from our woodturning friends, and off craigslist, often for free or at a low price. We also have commercial mills and wood recyclers that are located in Oregon. And because we live near

seaports, Oregon has vendors of exotic woods.

In future issues of this newsletters we will have articles describing particular woods and how they turn. In the meantime here are pictures of several often-turned Oregon trees and their leaves. Can you identify them?

Harvey Rogers, Vice President

